

ECO系列高效瓶坯注塑系统

ECO High Efficient Preform Injection System



DEMARK

德玛克控股集团

DEMARK HOLDING GROUP

HIGH EFFICIENT PREFORM INJECTION SYSTEM WITH BETTER PRICE PERFORMANCE RATIO

极具性价比的高效瓶坯注塑系统

德玛克创新为您，带来高达72腔的高速瓶坯注塑系统，一台的效率是普通瓶坯注塑机的两倍多。领先于业内其他同行的保压阀设计，使得溶胶和保压可以同时进行，有效缩短了周期时间。同时搭配德玛斯高品质瓶坯注塑模具，模后冷却机械手，西门子集中控制系统和高效原料干燥系统，使得您在有限的投资内收获更多的回报。

Demark brings you the ECO series high efficient preform injection system with many years' innovation. The system is up to 72 cavities and double production capacity comparing with normal injection machine. With the advanced pressure hold technology, the system makes the plasticization and pressure hold at the same time therefore has a better cycle time for production. With DEMARS precision preform injection molds, post cooling take out robot, centralized control system and high efficient material drying system, the ECO series brings you more returns with limited investment.

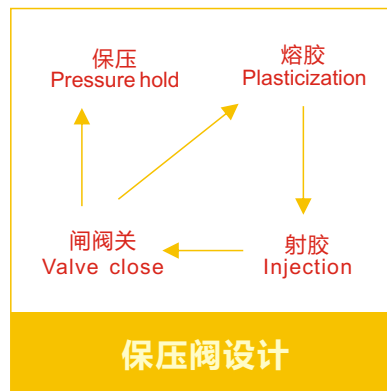
专为PET生产而设计的加大型螺杆和快速开合模设计，该系统广泛应用于水和饮料瓶坯的生产，同时也特别适合大克重瓶坯的生产，如油坯以及5L水坯。不仅如此，德玛克还秉承包括瓶坯设计和整厂规划等交钥匙服务理念，为您从多个维度提供更多的建议和帮助。德玛克ECO系列瓶坯注塑系统，为高效率生产而生。

The ECO series is specialized for preform production with enlarge screw and fast clamping design. The system is widely used for water and beverage preform production as well as big gram preform such as oil and 5L water preform. Demark also insist on the "turnkey" solution concept by offering preform design and whole plant planning to our customers with more suggestion on various aspects.

Demark ECO series, born to produce with efficiency.

"DEMARS" 是德玛克控股集团的模具品牌

"DEMARS" is a mold brand of Demark Holding Group



独立伺服电机溶胶

Electric screw drive

进口伺服电机溶胶，带来了节能和效率的双重提升。

Independent electric screw drive brings you both plasticization and energy efficiency.

保压阀技术

Pressure hold valve

领先于业内其他同行的保压阀设计，使得溶胶和保压可以同时进行，有效缩短了周期时间。

With the advanced pressure hold technology, the system makes the plasticization and pressure hold at the same time therefore has a better cycle time for production.

可靠的锁模

Reliable clamping

专为PET瓶坯模具设计的模板结构，使得模具各部分都受力均匀，同时保证了高速开合模的要求。

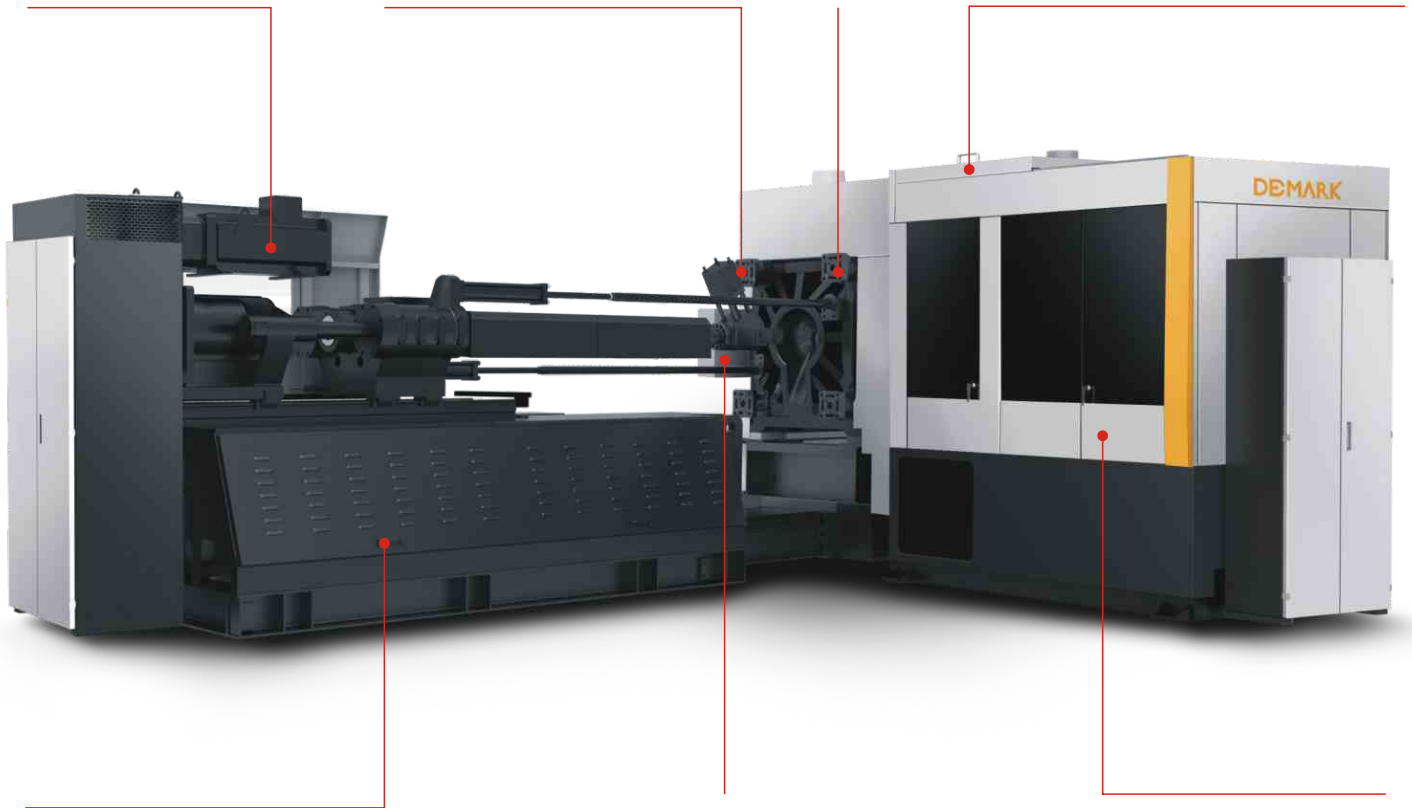
Special design for PET preform mold, which ensure the fast clamping movement and uniformly forced of the mold.

比例阀控制

Proportional valve control

先进的比例阀控制，使得开合模更加快速精准

Advanced proportional valve control technology makes the fast and precise clamping possible.



伺服液压系统

Servo motor drive hydraulic system

液压系统全由伺服电机提供动力，大幅度节省能耗的同时保证了充足的动力。

The hydraulic system was driven by a servo motor which ensure the lower energy consumption and sufficient hydraulic power supply.

西门子控制系统

SIEMENS control system

专门为PET生产设计的基于西门子集中操作系统

SIEMENS centralized control system special designed for PET production.

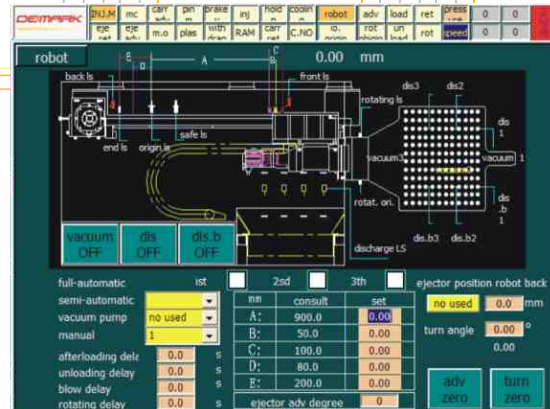
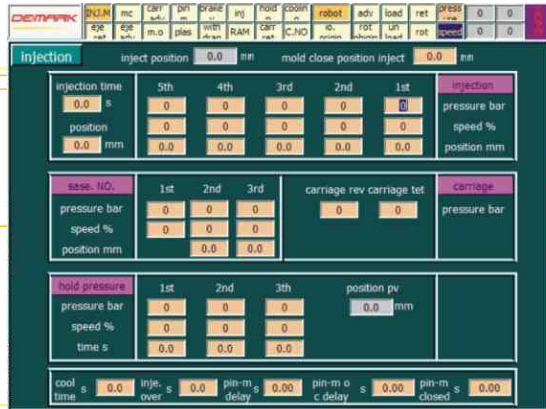
后冷却机械手

Post cooling take out robot

三工位模后冷却机械手使瓶坯充分冷却的同时，更缩短了产品生产周期

Three station post cooling robot makes the preform perfectly cooled with better cycle time

西门子控制系统 SIEMENS control system



德玛克采用基于西门子工业控制的解决方案，特别开发了适合于大产量瓶坯生产的控制系统。具有以下优势：

- 采取数据通讯方式，动作响应快，多动作协调运行，操作简便
- 全面的安全保护，具机器运行故障报警及记录功能
- 可在办公室实时监控机器运行，具有远程实时监视与故障诊断功能
- 模具温度在控制面板上设定，修改，控制精度高，且稳定12寸控制屏

Based on the SIEMENS industrial control solution, Demark develop the control system perfectly suitable for large scale preform production. With following advantage:

- By using data communication, the system with movement fast reaction and multi movement corporation capability.
- With alarm system and fault recording function, the system running safe with fully protection.
- With remote real-time monitoring and fault diagnosing function, the system could be controlled in your own office.
- The mold temperature could be controlled in control panel with high accuracy.equipped with 12-inch control screen

同时，另有德国倍福集成控制系统，与奥地利贝加莱自动控制系统可供选择。
Customer also can choose BECKHOFF control system from Germany and B&R automation control system from Austria

主要技术参数 Main technical features

MODEL		UNIT	ECO260/2000	ECO260/2500	ECO300/2500	ECO300/3500		
INJECTION UNIT 注塑单元	螺杆长径比	Screw L/D Ratio	L/D	25	25	25	25	
	螺杆直径	Screw Diameter	mm	80	90	90	100	
	射出量 (PET)	Shot Weight(PET)	g	2000	2500	2500	3500	
	塑化率 (PET)	Plasticizing Rate(PET)	g/s	80	110	110	150	
CLAMPING UNIT 合模单元	锁模力	Clamping Force	T	260	260	300	300	
	移模行程	Clamping Stroke	mm	540	540	585	585	
	最大/小模厚	Max/min Thickness of Mould	mm	200-580	200-580	300-720	300-720	
	导杆间距(宽x高)	Space Between Tie Bars(WxH)	mm	570x570	570x570	660x760	660x760	
	顶出行程	Ejector Stroke	mm	150	150	180	180	
	顶出力	Ejector Force	T	8	8	20	20	
	顶出杆根数	No.of Ejector Pins	pcs	9	9	9	9	
MOULD 模具规格	最大腔数	Cavity(Max)	pcs	32	32	48	72	
	模具形式	气动针阀式热流道瓶坯模具 Needle Vale Of Non-cutting PET Preform Mold						
POWER UNIT 电气单元	马达功率	Pump Motor Power	KW	39+45	39+55	39+55	39+39+82	
	机械手功率	Robot Power	KW	12	12	36	36	
	熔胶电热容量	Heater Input Capacity	KW	43	51	51	63	
	模具加热容量	Mould Heater Capacity	KW	30	30	55	55	
ROBOT 取胚冷却 机械手	机械手真空吸头	Manipulator	cavity	96	96	216	216	
	瓶坯冷却装置	Cooling Form	cavity	32x3	32x3	48x3	72x3	
	外型尺寸(长x宽x高)	Size(LxWxH)	cm	257x160x220	270x160x220	280x160x250	280x160x250	
OTHER 其他	电力要求 (交流三相四线制)	Power supply	V/HZ	380/50	380/50	380/50	380/50	
		(3-phase AC)	KW	169	187	226	314	
	冷冻水要求	Chilling Water	°C		5-11	5-11	5-12	5-12
			Mpa		0.8	0.8	0.8	0.8
			L/min		700	700	900	900
			°C		< 25	< 25	< 25	< 25
	冷却水要求	Cooling Water	Mpa		0.3	0.3	0.3	0.3
			L/min		100	100	120	120
			Mpa		0.7-0.9	0.7-0.9	0.7-0.9	0.7-0.9
	压缩空气要求	Compressed Air	L/min		400	400	800	800
主机外型尺寸(长x宽x高)			Machine Size(LxWxH)	cm	840x160x240	860x160x240	880x170x250	1020x210x250
整机重量	Machine Weight	T	14	14	17	18		

德玛克保留对产品进行修改的权利，规格如有变动，恕不另行通知。

Demark reserve the rights to make any product improvement or specification change without prior notice.





德玛克控股集团

地址: 上海市长宁区中山西路1055号SOHO中山广场A座507(200051)

电话: 021-60391130

传真: 021-60391123

DEMARK HOLDING GROUP

Add: Room 507, 5F, No.1055, West Zhongshan Road, Shanghai, P.R.China

TEL: +86-21-60391126

FAX: +86-21-60391123

www.demark.cn

ISO9001 & CE

©Copyright DEMARK CO., LTD. Information subject to alteration. 2016-10版

◇ 由于印刷的关系, 故正式机器的颜色与所示的图片有部分差异, 一切以机器实样为准。

